

# Hurford's Australian Native 5G Installation Instructions

Thank you for purchasing Hurford's Australian Native. Please read these instructions carefully prior to installation

## In General

Hurford's Australian Native is a floating timber floor, meaning that the edges of each board are joined to each other using the glueless 5G joining system, and are not fixed to the sub-floor. Hurford's Australian Native floats over an approved 2mm foam underlay and can be installed over any sound, dry and level surface. An expansion gap must be left around the entire perimeter of the floor to allow for initial and seasonal expansion. The boards are generally installed along the length of the room with the ends of boards laid with a natural random stagger. A successful installation will rely heavily on strict adherence to these instructions. The two most common causes of failure are uneven subfloors, and inadequate expansion to the perimeter of the floor. An uneven subfloor may lead to movement of the flooring underfoot and within the joining system, resulting in excessive noise, which often sound like crackling or creaking.

## Tools Needed

An installation kit containing expansion wedges, a pulling iron and a tapping block. You will also require a jigsaw, pencil, hammer, tape measure, sharp "Stanley" type knife and small hand tools associated with woodworking.

Along with your Hurford's Australian Native you'll need your approved underlay, and enough trims to complete your floor.

## Preparation

The first thing that you need to ensure is that the subfloor or surface that the Hurford's Australian Native is being installed over is level. Using a 1 metre straightedge, the subfloor level should not exceed +/- 3mm over 1 lineal metre in any direction. Remember, uneven floors may lead to movement and noise, so it is necessary to assess the levelness and get it right. Timber subfloors can be sanded level, and concrete subfloors or existing floor coverings can usually be levelled using a self-levelling compound. Hurford's Australian Native cannot be installed over carpet or carpet underlay but can be installed over well bonded vinyl, cork, ceramic tiles if sufficiently level.

Hurford's Australian Native must always be installed over a continuous damp proof membrane. This continuous damp proof membrane can be provided by 200uM builders plastic, overlapped 300mm at the joints and taped with a vapour tight tape or by the use of Hurford's "HUSHwalk" underlay. HUSHwalk underlays is manufactured with a plastic damp proof membrane on one side and are conveniently fitted with a 100mm overlap and peel and stick tape. HUSHwalk is rolled out along the starting wall with the plastic down, peel & stick side to the wall. Additional rows are rolled out with tape down over the extended clear overlap. The wax tape can then be peeled away forming the continuous damp proof. Cut ends must be taped with a water proof tape. In

the instance of a high risk, wet subfloors, or heated subfloors, always use 200uM builders plastic sheeting, overlapping joints by 300mm, taping joints with waterproof tape and turning up at walls or vertical fixtures. Door frames and architraves should be undercut prior to commencing installation using a scrap of flooring and a long, flexible hand saw. Undercut saws may be available from your local retailer and are specifically designed for this purpose.

Work out the trims to be installed, as some trims are easier to install prior to the flooring. This will be dependent on the direction of the trim to the flooring and the type of trim to be installed.

Your Australian Native flooring should be given sufficient time to acclimatise (48 hrs) by placing the unopened boxes in the room where they are to be installed. Note - Do not open the packaging until you are ready to install.

Each Australian Native flooring board should be inspected prior to installation to ensure the quality is acceptable. Installation implies acceptance of the appearance of the floor, relating to features visible at purchase, once the products are installed.

At all times, the temperature in the room should be between 18-26c and the recommended relative humidity in the room should be in the range of 40 -70%.

## Note

As a natural material, timber is prone to movement with variations in moisture content, heat and relative humidity in the environment. **The maximum width and length the product can be laid is 8 metres before additional expansion is required**

**- widths and lengths beyond 8 metres require the rooms to be broken up and additional expansion allowance needs to be incorporated (1mm for every 1mtr).**

## Installation

### 1. First plank, first row.

Place a 12 mm expansion gap (using a spacer) to the left and position the plank with a 12mm expansion gap against the wall using a spacer to maintain the gap.

### 2. Second plank, first row.

Place this plank gently and tight to the short end of the first one, remembering to allow a 12mm expansion gap against the wall

### 3. Fold the plank down in a single action movement.

During the fold down, make sure the planks are tight against each other. Afterwards press or gently knock at the short end just installed.

4. At the end of the first row, put a 12 mm expansion gap to the wall and measure the length of the last plank to fit.

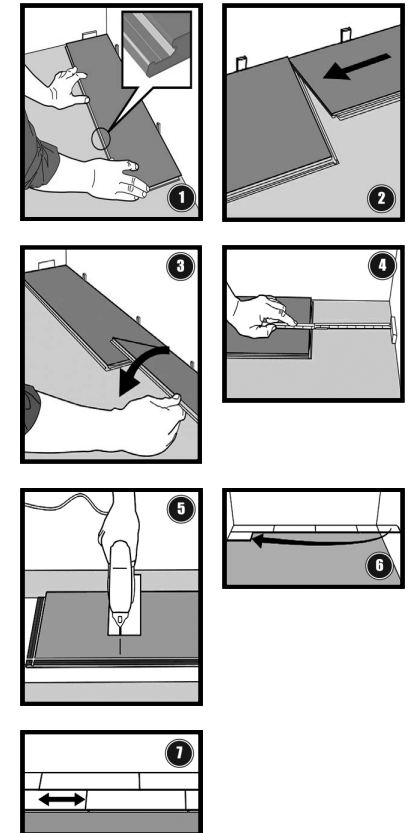
5. Cut with a drop saw, jig saw or hand saw.

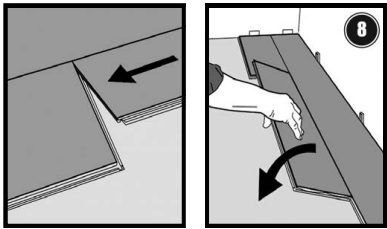
### 6. Second row.

The off cut of the previous row can be used as the starting plank as long as it is at least 500mm long. Remember to place a 12mm spacer at the end for the expansion allowance.

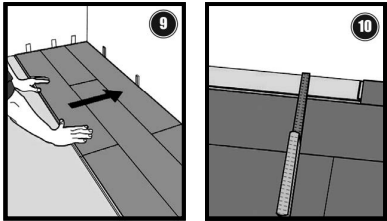
### 7. Distances between ends.

The minimum distance between plank ends in parallel rows is 400mm.

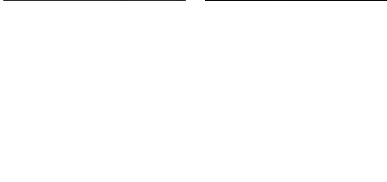




**8. Second plank, second row.**  
Place the plank gently and tight to the end of the previous plank and fold it down in a single action movement. During the fold down action, make sure the plank ends are tight against each other and press the end to ensure the 5G lock is engaged



**9. After 2-3 rows.**  
Check all expansion gaps (12mm) are in place and are being maintained at both ends and sides of the installation.

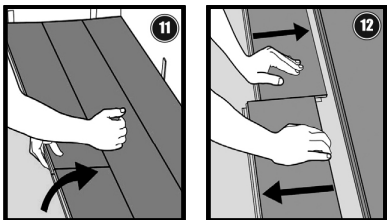


**10. Last row.**  
The minimum width of the final plank is 50 mm.  
Once your floor is complete, remember to ensure a 12mm expansion gap is left between the wall and the final plank.

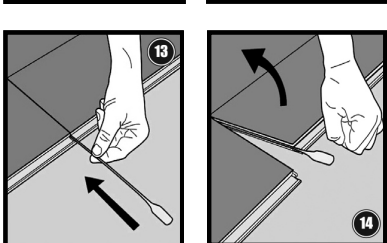
Remove all spacers around the installation to ensure the expansion gap is clear and unimpeded.

#### Disassembling (without tool)

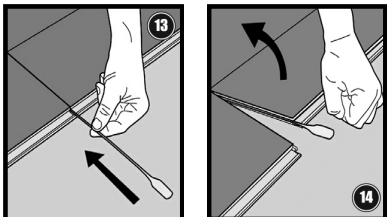
Your floor can very easy be disassembled, which enables replacement during installation and also during use.



**11.** Separate the whole row by carefully lifting up and slightly knocking just above the joint. Fold up and release the whole side.



**12.** Disassemble the planks by sliding horizontally.  
(Do not fold up)



#### Disassembling with Valinge Release Tool

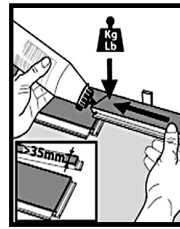
**13.** Place a special Valinge Release Tool into the joint.



**14.** Keep the left plank down to the floor and release the right plank - fold it up.

#### Special installations

Narrow plank widths with no 5G tongue on the end, first and/or last row  
Joining at the ends, length cut planks, glue the joint with PVA glue.

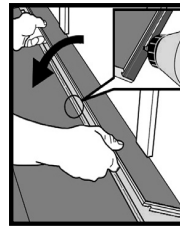


#### Horizontal installation

Cut off the locking element with a chisel, and push the planks horizontally together.



If necessary, place 12mm spacers between the last planks and the wall to keep the planks together during the curing time of the glue.



#### Special Notes

- » 12mm is the minimum perimeter expansion gap for all applications. Larger floors or floors that will be exposed to higher levels of relative humidity will need larger expansion gaps. Some multiroom or very large installations will need expansion joints installed throughout the floor. In most cases, multi-room installations will need to be separated at doorways using connector trims.
- » Hurford's Australian Native can be direct stuck to a prepared subfloor. We recommend the use of a non etching, isocyanate free timber flooring adhesive

used as instructed, along with their recommended ancillary products.

- » When installing on stairs, glue both tread and riser using a recommended polyurethane or construction adhesive. No underlay should be used on tread or riser. Special stair nosing trims can be used for this application.
- » Hurford's Australian Native is not designed to be exposed to extremes of humidity or temperature. It is important to note that floors exposed to such conditions may fail. Sensible protection of the flooring from such extremes, particularly in unoccupied homes, must be afforded. Measures can include curtains, awning, blinds, window tinting, and early commissioning and/or regular use of air conditioning or humidity control devices. Protection of the flooring from any radiant heat source should also be provided, eg: around combustion heaters and other heaters, as these generate extreme low humidity. Hurford's Australian Native should not be installed until these measures are in place, and should not be installed more than 2 weeks prior to occupation of the home. It is important to understand that any warranty, expressed or implied, may be voided if the floor is exposed to extreme conditions.
- » It is the homeowner's responsibility to provide a moderate indoor environment in order to prevent cracking and distortion of the flooring, even when unoccupied.

#### After the installation

You can use the floor immediately after installation. The skirting boards must be fixed to the walls (never to the floor) to allow clear and unimpeded expansion.

#### Cleaning and maintenance

- » Sweep or vacuum (bristles down) your floor regularly to remove stones and abrasive grit or dirt.
- » Damp clean using a barely moist mop. For the best result, add one capful of a timber floor cleaner to your water and towel off any excess moisture immediately after mopping.
- » Use a mild soap or similar. Any water spilt accidentally must be wiped off immediately.
- » Apply felt floor protectors to the underside of all moving furniture to reduce marking or scratching.
- » Place dirt trapping mats at all exterior doors.
- » Do not use steam mops on your Australian Native floor.
- » Australian Native flooring, if required, can be re-coated or resanded as required, just like traditional timber flooring.

Again, thank you for purchasing Hurford's Australian Native.

[www.hurfordflooring.co.nz](http://www.hurfordflooring.co.nz)